

Installing GradFees and Advocate on Windows 7 and Windows Vista Professional

If you are installing iLaw GradFees or iLaw Advocate on to a PC or Laptop that is running Microsoft Windows 7 or Vista Business then you will need to install a later version of SQL server in order to run the database.

Explore the disk and copy the SQL Express 2008 folder to a local directory such as the desktop.

Running the Automatic Installer

There are two files in the folder. The first file will perform the installation automatically. Run this file:

```
INSTALL_MSSQL_GRADFEESL.cmd
```

If this does not run then you will need to manually install SQL 2008 Express.

Manually Installing SQL Express 2008

1. In the SQL Express 2008 folder run this file:

```
SQLEXP_x86_ENU.exe
```

2. Select Installation from the side menu. Then select New SQL Server stand-alone Installation or add features to an existing installation.

Select the first option listed in Installtions



[New SQL Server stand-alone installation or add features to an existing installation](#)

Launch a wizard to install SQL Server 2008 in a non-clustered environment or add features to an existing SQL Server 2008 instance.

4. The installation starts with checks of the system. You can show the details of the results if you want to. Click OK to continue.

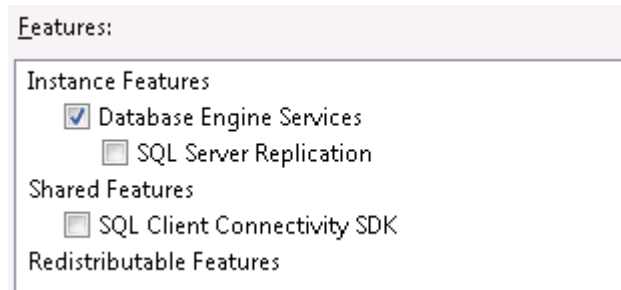
5. Accept the Terms and Conditions and then click Next.

6. In Setup Support files click on Install. When the installation is finished you will see a list of

Rules and Status. Click on Next.

7. The Next step is to Select Database Engine Services in the Feature selection. This is the first checkbox in Features.

Select Database Engine Services in Feature Selection

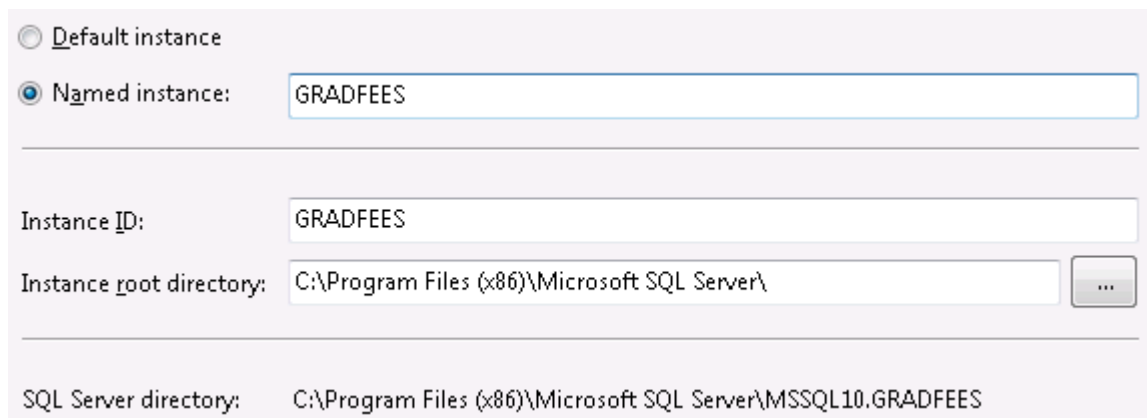


Features:

- Instance Features
 - Database Engine Services
 - SQL Server Replication
- Shared Features
 - SQL Client Connectivity SDK
- Redistributable Features

8. In Instance Configuration select Named Instance and type GRADFEES. You will see GRADFEES also appear in the Instance ID box. Click on Next.

Select Named Instance and type GRADFEES



Default instance

Named instance: GRADFEES

Instance ID: GRADFEES

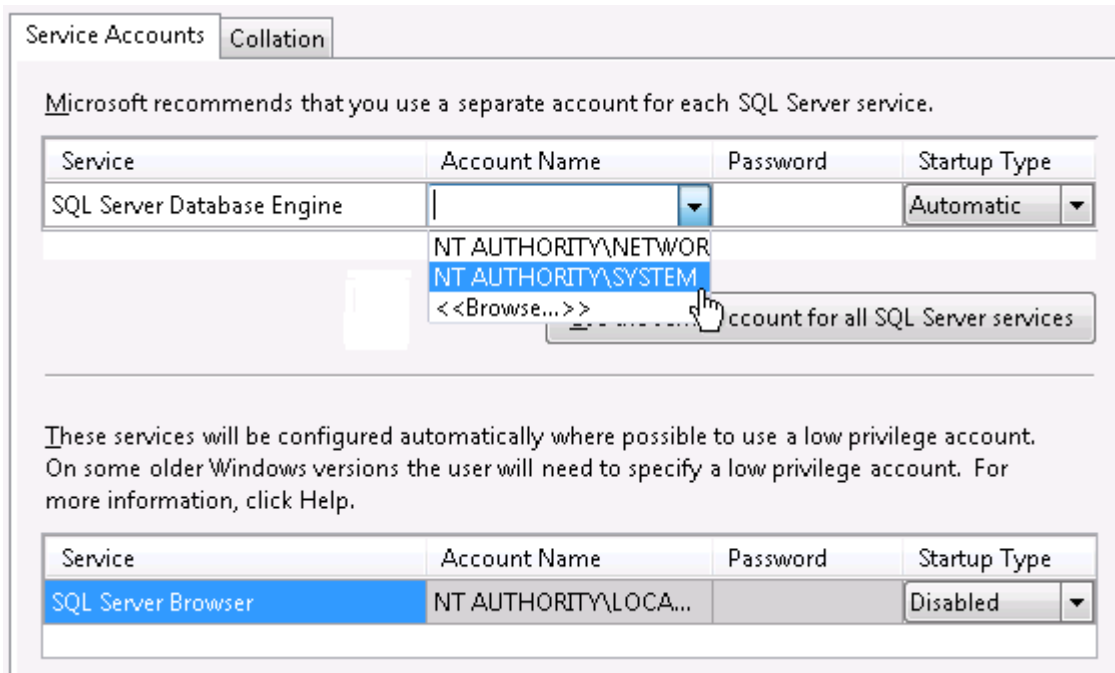
Instance root directory: C:\Program Files (x86)\Microsoft SQL Server\ ...

SQL Server directory: C:\Program Files (x86)\Microsoft SQL Server\MSSQL10.GRADFEES

9. The Disk Space Requirements shows the details of the installation. Click on Next >

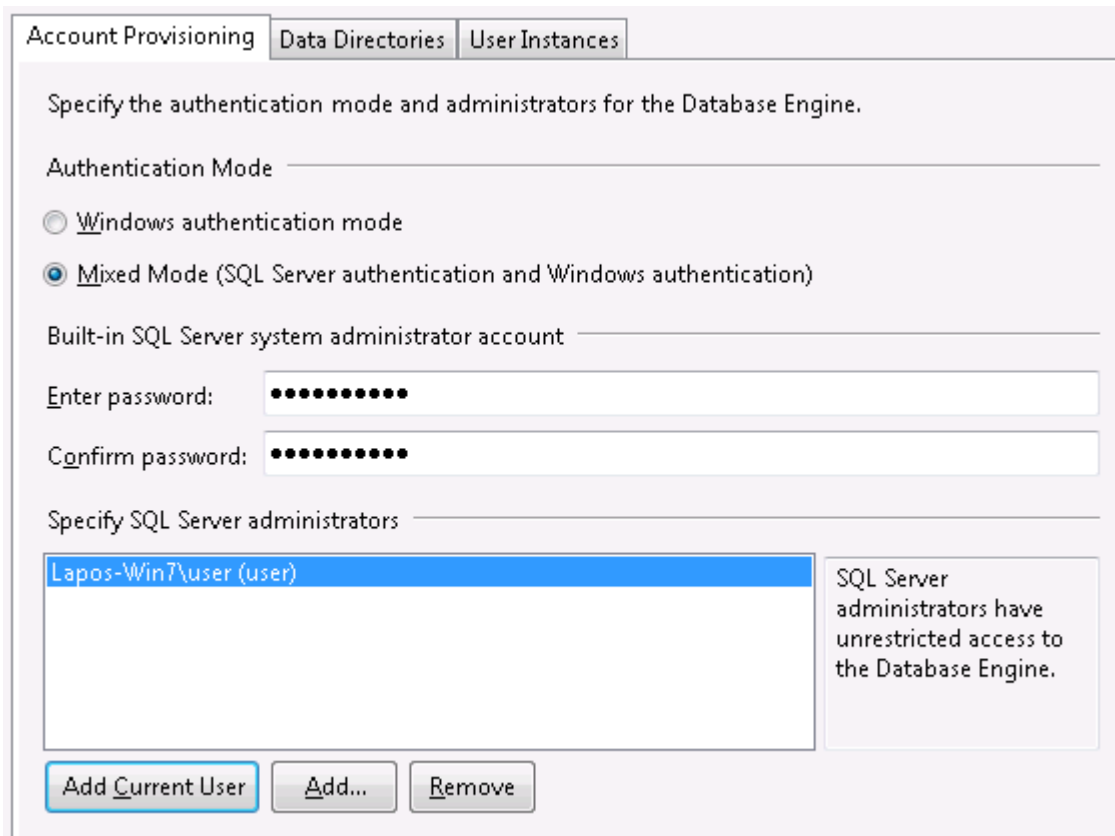
10. The Server Configuration screen requires the selection of the Account name in the Service Accounts tab. Where the Service is the SQL Server Database Engine select NT AUTHORITY\SYSTEM. This is all you have to do on this screen. Click on Next.

Select NT AUTHORITY\SYSTEM as the Account name for the SQL Server Database Engine



11. The next task is to set the Server Engine Configuration. In the Account Provisioning tab, Select Mixed Mode as the Authentication Mode, then enter and confirm the password which is creative24. When you have done this click on Add Current User.

Select Mixed Mode, enter the password and click on Add New User



12. Error and Usage Reporting. In this screen you can elect to send error reports. Click on Next The will determine if the Installation process will be blocked.

You are now ready to install. Click on Install. You will be able to see the progress of the installation.